

The new

SWINGLOX



6-digit numeric code



1 master, up to 9 user



Opening delay
up to 99 minutes



Dual code identification



Low battery warning



Certified Security.

VdS-Klasse 2 / EN 1300 B

The VdS certification according to **DIN EN 1300 : 2014-05** verifies the maximum quality and reliability of **SWINGLOX** products. The certificate is available for download on our website.



SAY HELLO TO SWINGLOX.

What is Swinglox?

SWINGLOX from STUV is a VdS-certified electronic safe lock with a swing bolt and circular input unit. With its slim and compact design, **SWINGLOX** is an ideal high-quality supplement for small to large safe deposits.

Set up the **SWINGLOX** for up to 9 users, each with their own code, activate „dual code“ identification, or use the opening delay for extra security.



Flash 4

1 Master

up to 9 user

Opening delay

Dual code

Change code

Create / delete user

User information

Check keyboard

Reset

Flash 5

1 Master

up to 8 user

Opening delay / Quick opening code

Change code

Create / delete user

User on / off

User information

Check keyboard

Reset

THINKING SAFE.

Amendment of the VdS test standard

Conventional electronic locks with a keyhole or cable opening in the safe door can be manipulated using liquids. Electrically conductive liquids can establish a connection between relevant contacts. This causes the motor to react and release the swing bolt.

The electronic system of the **SWINGLOX** remains securely locked, in accordance with the VdS time specification, if the housing is flooded.

The **SWINGLOX** is one of the first electronic lock systems in Germany to meet the relevant amendment of the VdS test standard.



LiquidSecured
SWINGLOX-ELECTRONIC
Patent pending





Easiest operation.

Enter PIN code



Turn handle



Open the safe door

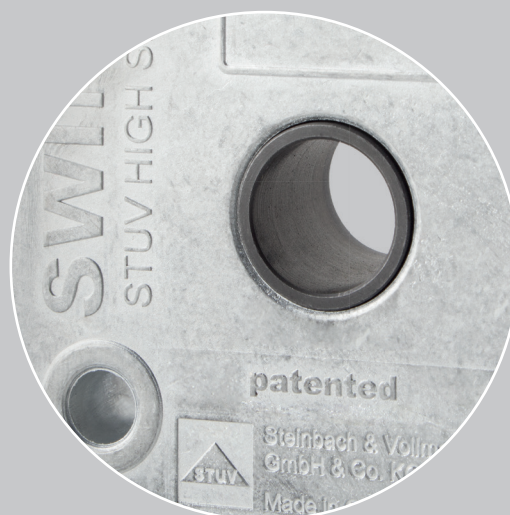
THINKING SAFER.

Forceful effect

In most cases, violent attacks on an electronic lock concentrate on the keyhole or the cable entry in the safe door.

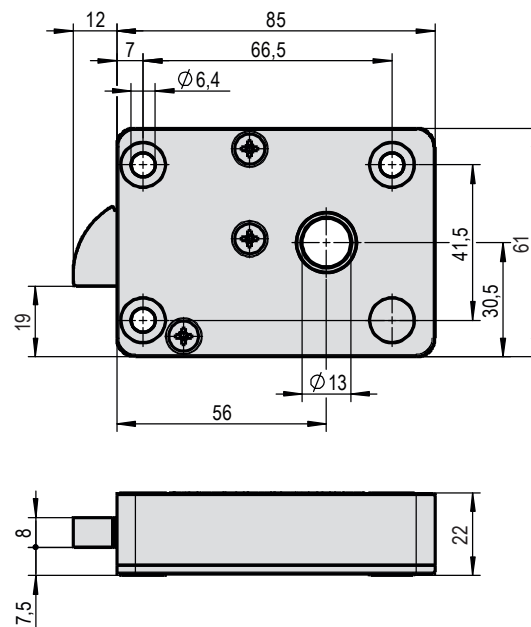
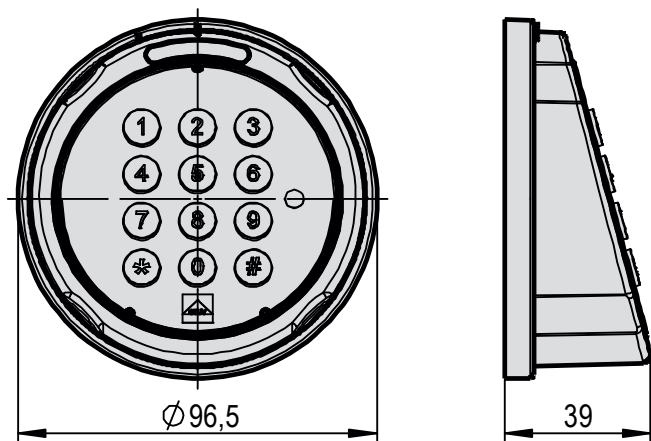
The **SWINGLOX** electronic lock is optimally protected against attacks of this kind. A patented*, circumferential, machined bushing made of hardened steel acts as a drill protection and prevents penetrating tools from hitting their mark.

*(Patent DE 2020 1610 2422)



In detail.

The new SWINGLOX. One product - many advantages and a convincing production quality. Here you will find the technical information.



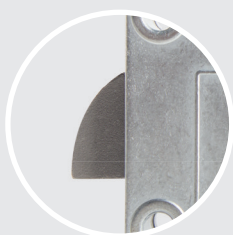
Input unit

| | |
|--------------|--|
| Dimensions | Ø 96,5 x 39 mm |
| Cable length | 450 mm |
| Fastening | Thread forming screws DIN 7500 Form C M4 x 25 (Head screws acc. to DIN 7985) |
| Torque | 2,7 Nm |
| Power supply | 9-volt battery 6LR61 (Battery inside housing) |
| Housing | Die-cast zinc, polyamide |
| Keyboard | Silicone |

Lock

| | |
|--------------|--|
| Dimensions | 85 x 61 x 22 mm |
| Bolt | 21,4 x 8 x 12 mm |
| Fastening | Head bolt DIN EN ISO 4762 - M6x30-8.8 or 3 head screws BSW 1/4 x 30 mm |
| Torque | 6 Nm |
| Power supply | via keyboard cable connection |
| Housing | Die-cast zinc |
| Swing bolt | Stainless steel precision casting |

| | |
|---------------|--|
| Certification | VdS Class 2 / EN 1300 B |
| Included | Input unit + fastening plate, lock, cable connection, 2 screws for fastening plate |
| On demand | Screws for lock fastening, 9-volt battery 6LR61 |



Marginal clearance.

The SWINGLOX Swing bolt

When locked, the SWINGLOX swing bolt made of precision-cast stainless steel grants minimal movement tolerance. The swing bolt engages immediately and proves a stable and firm feel when locked.