

## Assembly Sheet


English

Englisch

1	Assembly Instructions for Retrofit Kit (ENGLISH) .....	5
1.1	Assembly Overview .....	5
1.2	Assembly Sequence .....	6

# 1 Assembly Instructions for Retrofit Kit (ENGLISH)

for CombiLock 200 simplex, - pro und CombiLock 200 RFID

 Assemble and install retrofit kit article no. 10017375.001 for the electronic lock and the keypad according to this assembly sheet.

### Caution

**Applying too much force can cause damage.**

**Consequences which might arise from not being aware of the danger.**

Do not use more torque than specified in the Assembly Instructions when fastening the attachment ring and the lock.

The original assembly instructions are part of the VdS approval. Failure to follow these instructions will invalidate that approval.

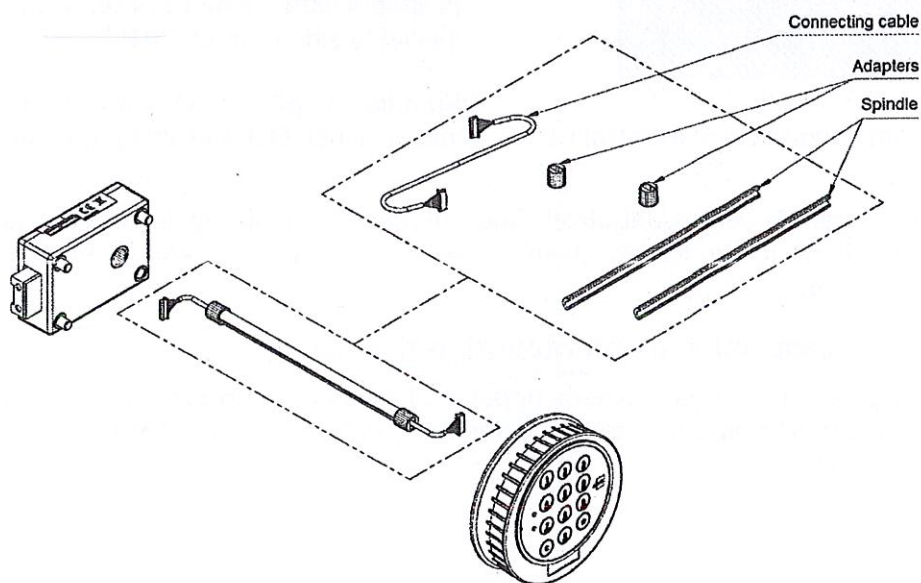
## 1.1 Assembly Overview

The spindle (Variant A in the manual) consists of two half pipe pieces and two adapters.

### Caution

**The connecting cable is thinner than the one within the standard accessory set.**

Use the connecting cable from this retrofit kit. Take care not to jam it between the half pipes.



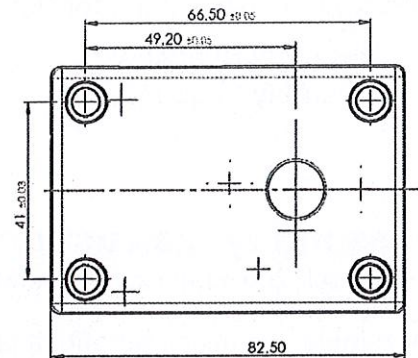
## 1.2 Assembly Sequence

### 1.2.1 Checking on Bores / Drilling the Bores

Check whether there are bores already drilled into the safe door. Bores are required for the spindle, the attachment ring and the lock.

If required: Drill a hole of min. 8.2 mm, max. 12 mm in diameter into the door of the safe.

Drill further bores, if required, when performing the tasks of section 1.2.3.

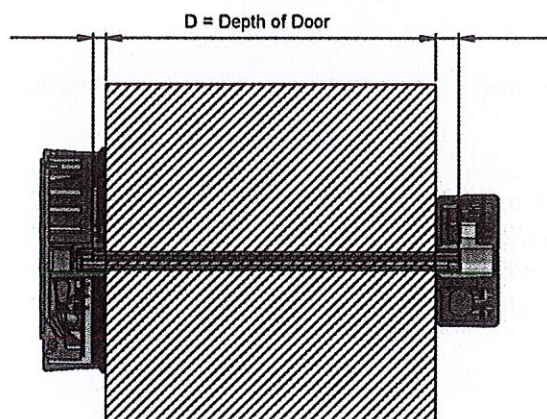


### 1.2.2 Shortening and Assembling the Spindle

The spindle may have to be adapted to the dimensions of the safe.

#### Caution

**A spindle with burrs might lead to damages to contact areas within the adapter, so that the assembled spindle might generate too much circumferential / torsional backlash.**  
Take care to remove all burrs from places where sawing took place before assembling the spindle.



Both spindle halves have to be of equal length and depending on the type of keypad, each half spindle has to be 19 mm / 15.9 mm or 14.4 mm longer than the safe door is deep. In order to define the length, you can use the formula that is valid for your system:

Spindle length = D mm + 19 mm (systems with keypad CombiControl).

Spindle length = D mm + 15.9 mm (systems with keypad CombiControl CL 38, available since March 2015).

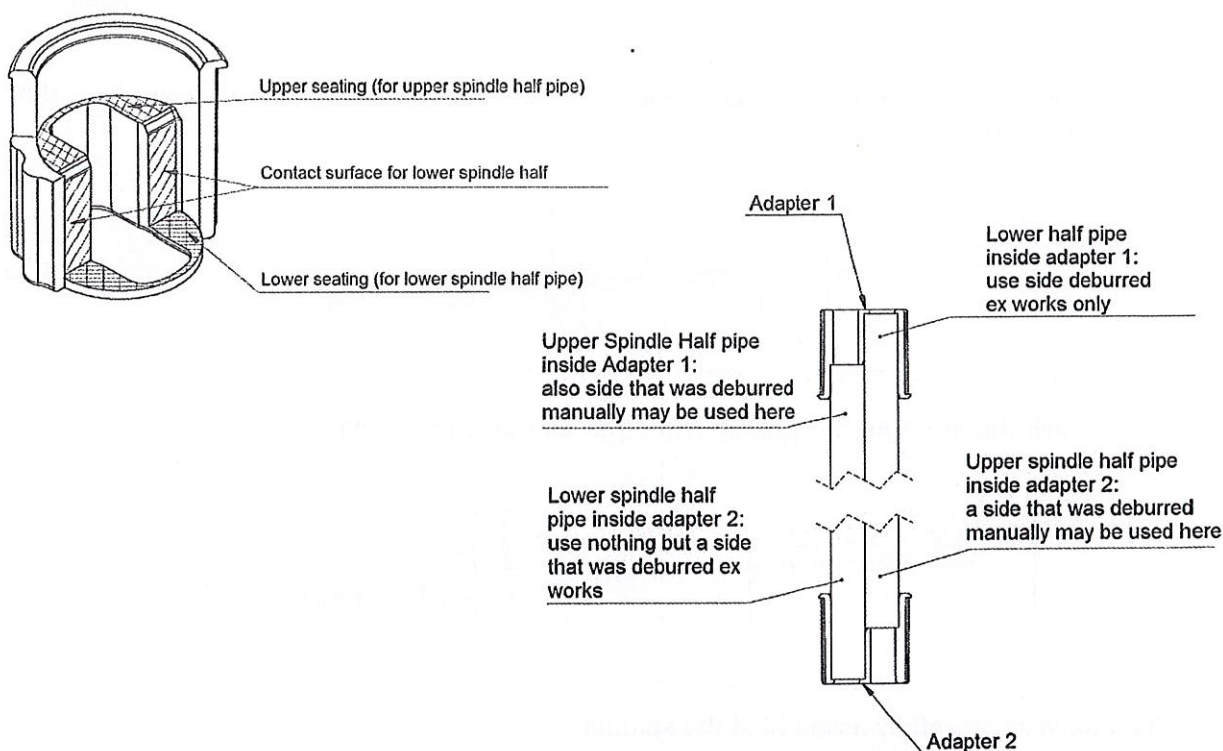
Spindle length = D mm + 14.4 mm (systems with keypad CombiControl CL 38, available since October 2015, grey adapters).

Ex works, the spindle comes deburred. Shortening the spindle by sawing causes burrs. Shorten the spindle to the length given above, if required, and remove burrs from the spindle, if required.

### 1.2.3 Preassembling and Mounting the Spindle

The following figures illustrate where upper and lower seating are within the adapter. The lower spindle half pipe (the side of it that was deburred ex works) should lie evenly upon the lower seating.

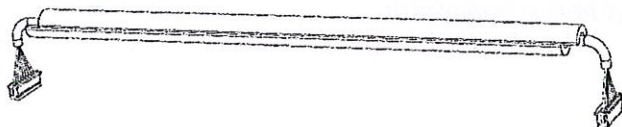




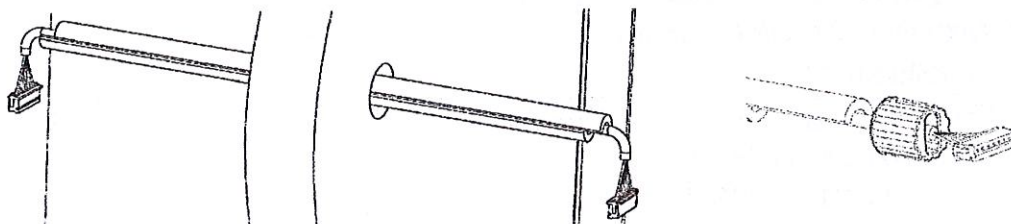
### Caution

**Danger of half pipe being not supported properly.**  
**Only use the side of the spindle that has been deburred ex works (not manually!) to be placed at the lower seating.**  
 Use manually deburred spindle sides as upper spindle half pipes that are placed upon the upper seating only, never on the lower one.

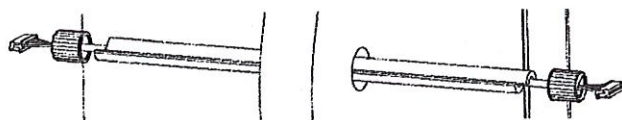
1. Put the cable from the retrofit kit into the spindle half pipes.



2. Thread cable within spindle half pipes through the safe door.

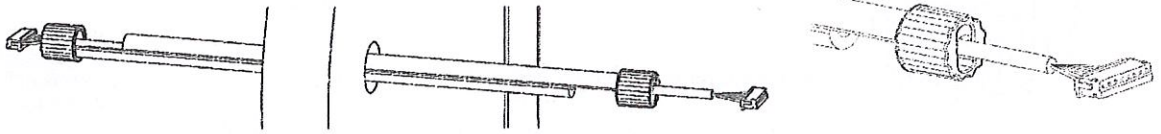


3. Attach an adapter on both cable ends.

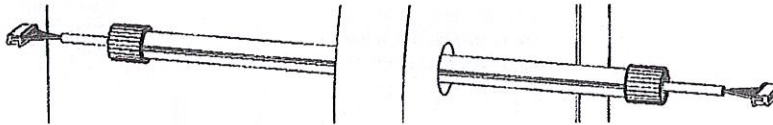


Make sure the open adapter side faces the spindle half pipes.

4. Push the lower spindle half pipes (deburred ex works!) all the way into the adapters.



5. Push the premounted spindle half pipes all the way into each other.



You have successfully assembled the spindle.

#### 1.2.4 Further Instructions

Mount the attachment ring, the keypad and the lock according to the assembly instructions. These components are to be mounted with the fastening materials used at the site.

Errors and technical change without notice excepted!

#### Herausgeber / Publisher

INSYS MICROELECTRONICS GmbH

Hermann-Köhl-Str. 22

D 93049 Regensburg

Tel.: 49 941 58692 0

Fax.: 49 941 58692 45

E-Mail: [info@insys-locks.com](mailto:info@insys-locks.com)

Internet: <http://www.insys-locks.com>